

Infitek

DIGITAL VISCOMETER



Infitek



Infitek



Infitek



Infitek



Infitek

Infitek

Infitek Co., Ltd.

TEL: +86-531-88982330

FAX: +86-531-88983691

Website: infitek.com

Email: info@infitek.com

Service: support@infitek.com

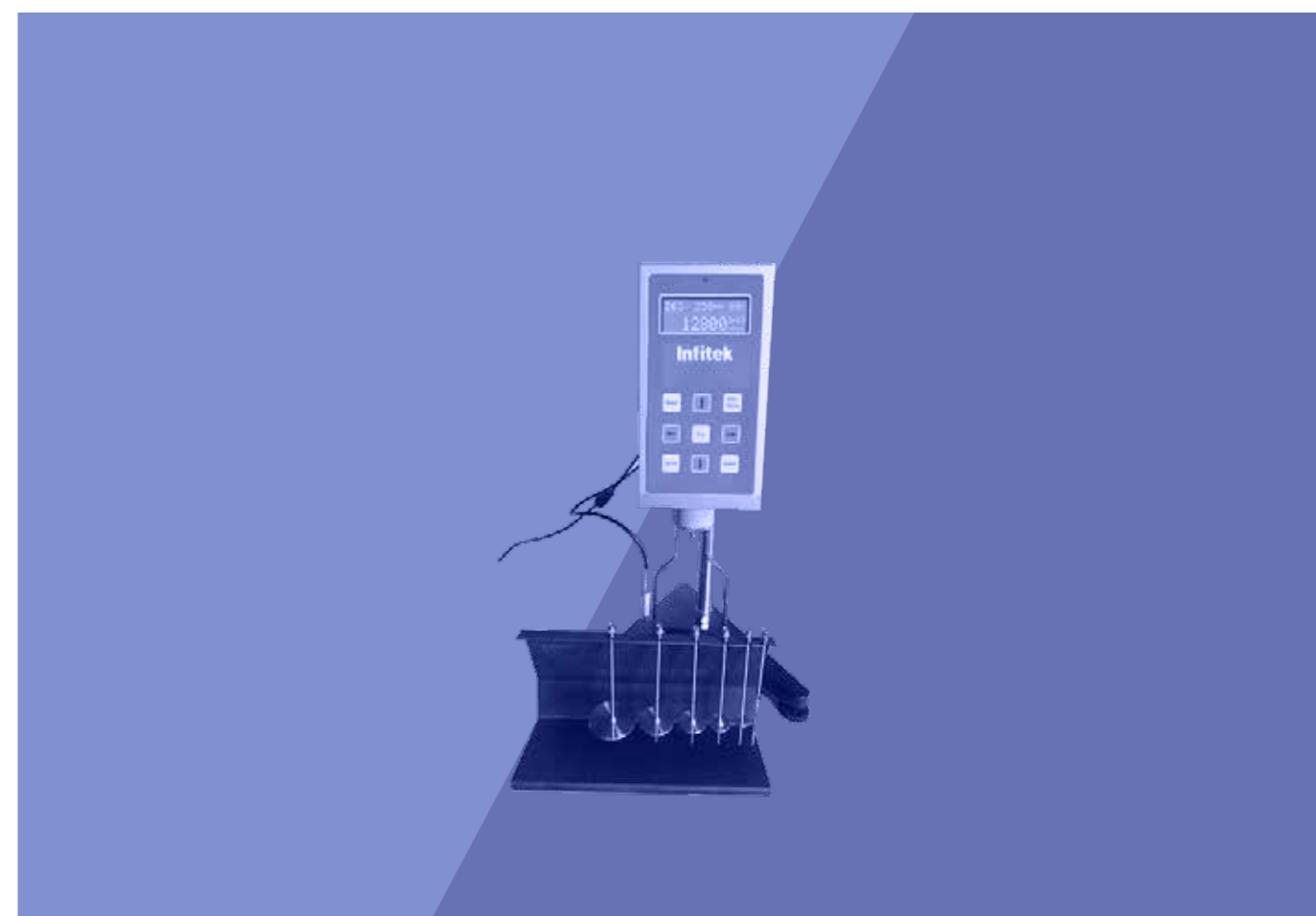
Address: Room 201, Building A, No.1 Qianwan 1st Road, Qianhai
Shenzhen-Hong Kong Cooperation Zone, Shenzhen (Settled in
Shenzhen Qianhai Business Secretary Co., Ltd.)

US Office

INFITEK INC.

522W RIVERSIDE AVE STE N,SPOKANE,WA 99201

EMAIL: INFO@INFITEK.COM



Digital Viscometer

VSC-N4



Options (Need to be ordered together with the host)

- Extreme low viscometer adapter (with one spindle L0)
- Small sample adapter (with spindle 21, 27, 28 and 29 each)
- Spindle L5
- Temperature-controlled heater (with spindle 21, 27, 28 and 29 each)
- RTD temperature probe
- Specially used printer

Apparatus to be equipped

Digital viscosity meter	1 pce	ascending and falling rack	1 set
Standard spindle	1 set	power adapter	1 pce
Protective frame of spindle	1 pce	spanner	1 pce
Seat and leveling feet	1 set	RS232 standard output interface	1 pce

Specifications

Model	VSC-N4
Measuring Range (mPa·s)	20~2,000,000
Rotating Speed (RPM)	Eight adjustable speed:0.3, 0.6, 1.5, 3, 6, 12, 30, 60
Number of Spindles	Spindles (Code L1, L2, L3, L4) are equipped with the product
Accuracy	±5% relative error
Return Capacity	±1% relative error
Power	Power adapter (input: 100-240V, 50/60Hz)
LCD screen display	The LCD screen can display the viscosity, speed, torque, spindle and the maximum viscosity can be measured in the current spindle speed value.

Digital Viscometer

VSC-N5

Options (Need to be ordered together with the host)

- Extreme low viscometer adapter (with one spindle L0)
- Small sample adapter (with spindle 21, 27, 28 and 29 each)
- Spindle L5
- Temperature-controlled heater (with spindle 21, 27, 28 and 29 each)
- RTD temperature probe
- Specially used printer



Apparatus to be equipped

Digital viscosity meter	1 pce	ascending and falling rack	1 set
Standard spindle	1 set	power adapter	1 pce
Protective frame of spindle	1 pce	spanner	1 pce
Seat and leveling feet	1 set	RS232 standard output interface	1 pce

Specifications

Model	VSC-N5
Measuring Range(mPa·s)	20~100,000
Rotating Speed (RPM)	Four adjustable speed:6, 12, 30, 60
Number of Spindles	Spindles (Code L1, L2, L3, L4) are equipped with the product
Accuracy	±1% full scale range in use
Return Capacity	±0.5% full scale range in use
Power	Power adapter (input: 100-240V, 50/60Hz)
LCD screen display	The LCD screen can display the viscosity, speed, torque, spindle and the maximum viscosity can be measured in the current spindle speed value.
Package Dimension (W*D*H)(mm)	460*400*280
G.W.(kg)	6.4

Digital Viscometer

VSC-N8

Options (Need to be ordered together with the host)

- Extreme low viscometer adapter (with one spindle L0)
- Small sample adapter (with spindle 21, 27, 28 and 29 each)
- Spindle L5
- Temperature-controlled heater (with spindle 21, 27, 28 and 29 each)
- RTD temperature probe
- Specially used printer



Apparatus to be equipped

Digital viscosity meter	1 pce	ascending and falling rack	1 set
Standard spindle	1 set	power adapter	1 pce
Protective frame of spindle	1 pce	spanner	1 pce
Seat and leveling feet	1 set	RS232 standard output interface	1 pce

Specifications

Model	VSC-N8
Measuring Range (mPa·s)	20~2,000,000
Rotating Speed (RPM)	Eight adjustable speed:0.3, 0.6, 1.5, 3, 6, 12, 30, 60
Number of Spindles	Spindles (Code L1, L2, L3, L4) are equipped with the product
Accuracy	±1% full scale range in use
Return Capacity	±0.5% full scale range in use
Power	Power adapter (input: 100-240V, 50/60Hz)
LCD screen display	The LCD screen can display the viscosity, speed, torque, spindle and the maximum viscosity can be measured in the current spindle speed value.

Digital Viscometer

VSC-S1

Options (Need to be ordered together with the host)

- Extreme low viscometer adapter (with one spindle L0)
- Small sample adapter (with spindle 21, 27, 28 and 29 each)
- Temperature-controlled heater (with spindle 21, 27, 28 and 29 each)
- Spindle L5
- Special software that can complete the function in collecting the data automatically
- Specially used printer



Apparatus to be equipped

Digital viscosity meter	1 pce	ascending and falling rack	1 set
Standard spindle	1 set	power adapter	1 pce
Protective frame of spindle	1 pce	spanner	1 pce
Seat and leveling feet	1 set	RS232 standard output interface	1 pce
RTD temperature probe	1 pce	-	-

Specifications

Model	VSC-S1
Measuring Range (mPa·s)	20~600,000
Rotating Speed (RPM)	1~60 (Stepless Gear)
Number of Spindles	Spindles (Code L1, L2, L3, L4) are equipped with the product
Accuracy	±1% full scale range in use
Repeatability	±0.5% full scale range in use
Readability	1. when viscosity is lower than 10.0 cp: 0.01 2. when viscosity is lower than 10000 cp: 0.1 3. when viscosity is equal or higher than 10000 cp: 1
Power	Power adapter (input: 100-240V, 50/60Hz)
LCD screen display	The LCD screen can display the viscosity, speed, torque spindle, temperature and the maximum viscosity can be measured in the current spindle speed value.

Digital Viscometer

VSC-S2

Options (Need to be ordered together with the host)

- Extreme low viscometer adapter (with one spindle L0)
- Small sample adapter (with spindle 21, 27, 28 and 29 each)
- Temperature-controlled heater (with spindle 21, 27, 28 and 29 each)
- Spindle L5
- Special software that can complete the function in collecting the data automatically
- Specially used printer



Apparatus to be equipped

Digital viscosity meter	1 pce	ascending and falling rack	1 set
Standard spindle	1 set	power adapter	1 pce
Protective frame of spindle	1 pce	spanner	1 pce
Seat and leveling feet	1 set	RS232 standard output interface	1 pce
RTD temperature probe	1 pce	-	-

Specifications

Model	VSC-S2
Measuring Range (mPa·s)	12~6,000,000
Rotating Speed (RPM)	0.1~99.9 (Stepless Gear)
Number of Spindles	Spindles (Code L1, L2, L3, L4) are equipped with the product
Accuracy	±1% full scale range in use
Repeatability	±0.5% full scale range in use
Readability	1. when viscosity is lower than 10.0 cp: 0.01 2. when viscosity is lower than 10000 cp: 0.1 3. when viscosity is equal or higher than 10000 cp: 1
Power	Power adapter (input: 100-240V, 50/60Hz)
LCD screen display	The LCD screen can display the viscosity, speed, torque spindle, temperature and the maximum viscosity can be measured in the current spindle speed value.

Digital Viscometer

VSC-S3

Options (Need to be ordered together with the host)

- Extreme low viscometer adapter (with one spindle L0)
- Small sample adapter (with spindle 21, 27, 28 and 29 each)
- Temperature-controlled heater (with spindle 21, 27, 28 and 29 each)
- Spindle L5
- Special software that can complete the function in collecting the data automatically
- Specially used printer



Apparatus to be equipped

Digital viscosity meter	1 pce	ascending and falling rack	1 set
Standard spindle	1 set	power adapter	1 pce
Protective frame of spindle	1 pce	spanner	1 pce
Seat and leveling feet	1 set	RS232 standard output interface	1 pce
RTD temperature probe	1 pce	-	-

Specifications

Model	VSC-S3
Measuring Range (mPa·s)	160~80,000,000
Rotating Speed (RPM)	0.1~99.9 (Stepless Gear)
Number of Spindles	Spindles (Code L1, L2, L3, L4) are equipped with the product
Accuracy	±1% full scale range in use
Repeatability	±0.5% full scale range in use
Readability	1. when viscosity is lower than 10.0 cp: 0.01 2. when viscosity is lower than 10000 cp: 0.1 3. when viscosity is equal or higher than 10000 cp: 1
Power	Power adapter (input: 100~240V, 50/60Hz)
LCD screen display	The LCD screen can display the viscosity, speed, torque spindle, temperature and the maximum viscosity can be measured in the current spindle speed value.

Digital Viscometer

VSC-SA

Options (Need to be ordered together with the host)

- Extreme low viscometer adapter (with one spindle L0)
- Temperature-controlled heater
- Special software that can complete the function in collecting the data automatically
- Specially used printer



Apparatus to be equipped

Digital viscosity meter	1 pce	ascending and falling rack	1 set
Standard spindle	1 set	power adapter	1 pce
Protective frame of spindle	1 pce	spanner	1 pce
Seat and leveling feet	1 set	RS232 standard output interface	1 pce
RTD temperature probe	1 pce	-	-

Specifications

Model	VSC-SA
Measuring Range (mPa·s)	50~10,000,000
Rotating Speed (RPM)	0.1~200 (Stepless Gear)
Number of Spindles	Spindles (Code 21, 27, 28, 29) are equipped with the product
Method	Manual and Automatic
Accuracy	±1% full scale range in use
Repeatability	±0.5% full scale range in use
Readability	1.when viscosity is lower than 10.0 cp: 0.01 2.when viscosity is lower than 10000 cp: 0.1 3.when viscosity is equal or higher than 10000 cp: 1
Power	Power adapter (input: 100~240V, 50/60Hz)
LCD screen display	The LCD screen can display the viscosity, speed, torque spindle, temperature and the maximum viscosity can be measured in the current spindle speed value.
Package Dimension (W*D*H) (mm)	420*360*530
G.W.(kg)	9.3

Digital Viscometer

VSC-E1-1

Options (Need to be ordered together with the host)

- Extreme low viscometer adapter (with one spindle L0)
- Small sample adapter (with spindle 21, 27, 28 and 29 each)
- Temperature-controlled heater (with spindle 21, 27, 28 and 29 each)
- Spindle L5
- Special software that can complete the function in collecting the data automatically
- DV program control download software
- Specially used printer



Apparatus to be equipped

Digital viscosity meter	1 pce	ascending and falling rack	1 set
Standard spindle	1 set	power adapter	1 pce
Protective frame of spindle	1 pce	spanner	1 pce
Seat and leveling feet	1 set	RS232 standard output interface	1 pce
RTD temperature probe	1 pce	-	-

Specifications

Model	VSC-E1-1
Measuring Range (mPa·s)	12~6,000,000
Rotating Speed (RPM)	0.1~99.9 (Stepless Gear)
Number of Spindles	Spindles (Code L1, L2, L3, L4) are equipped with the product
Accuracy	±1% full scale range in use
Repeatability	±0.5% full scale range in use
Readability	1.when viscosity is lower than 10.0 cp: 0.01 2.when viscosity is lower than 10000 cp: 0.1 3.when viscosity is equal or higher than 10000 cp: 1
Power	Power adapter (input: 100-240V, 50/60Hz)
LCD screen display	The LCD screen can display the viscosity, speed, torque spindle, temperature and the maximum viscosity can be measured in the current spindle speed value.
Package Dimension (W*D*H) (mm)	410*360*530
G.W.(kg)	9.3

Digital Viscometer

VSC-E1-2

Options (Need to be ordered together with the host)

- Extreme low viscometer adapter (with one spindle L0)
- Small sample adapter (with spindle 21, 27, 28 and 29 each)
- Temperature-controlled heater (with spindle 21, 27, 28 and 29 each)
- Spindle R1
- Special software that can complete the function in collecting the data automatically
- DV program control download software
- Specially used printer



Apparatus to be equipped

Digital viscosity meter	1 pce	ascending and falling rack	1 set
Standard spindle	1 set	power adapter	1 pce
Protective frame of spindle	1 pce	spanner	1 pce
Seat and leveling feet	1 set	RS232 standard output interface	1 pce
RTD temperature probe	1 pce	-	-

Specifications

Model	VSC-E1-2
Measuring Range (mPa·s)	80~40,000,000
Rotating Speed (RPM)	0.1~99.9 (Stepless Gear)
Number of Spindles	Spindles (Code R2, R3, R4, R5, R6, R7) are equipped with the product
Accuracy	±1% full scale range in use
Repeatability	±0.5% full scale range in use
Readability	1. when viscosity is lower than 10.0 cp: 0.01 2. when viscosity is lower than 10000 cp: 0.1 3. when viscosity is equal or higher than 10000 cp: 1
Power	Power adapter (input: 100-240V, 50/60Hz)
LCD screen display	The LCD screen can display the viscosity, speed, torque spindle, temperature and the maximum viscosity can be measured in the current spindle speed value.

Digital Viscometer

VSC-E1-3

Options (Need to be ordered together with the host)

- Extreme low viscometer adapter (with one spindle L0)
- Small sample adapter (with spindle 21, 27, 28 and 29 each)
- Temperature-controlled heater (with spindle 21, 27, 28 and 29 each)
- Spindle R1
- Special software that can complete the function in collecting the data automatically
- DV program control download software
- Specially used printer



Apparatus to be equipped

Digital viscosity meter	1 pce	ascending and falling rack	1 set
Standard spindle	1 set	power adapter	1 pce
Protective frame of spindle	1 pce	spanner	1 pce
Seat and leveling feet	1 set	RS232 standard output interface	1 pce
RTD temperature probe	1 pce	-	-

Specifications

Model	VSC-E1-3
Measuring Range (mPa·s)	640~320,000,000
Rotating Speed (RPM)	0.1~99.9 (Stepless Gear)
Number of Spindles	Spindles (Code R2, R3, R4, R5, R6, R7) are equipped with the product
Accuracy	±1% full scale range in use
Repeatability	±0.5% full scale range in use
Readability	1.when viscosity is lower than 10.0 cp: 0.01 2.when viscosity is lower than 10000 cp: 0.1 3.when viscosity is equal or higher than 10000 cp: 1
Power	Power adapter (input: 100-240V, 50/60Hz)
LCD screen display	The LCD screen can display the viscosity, speed, torque spindle, temperature and the maximum viscosity can be measured in the current spindle speed value.
Package Dimension (W*D*H) (mm)	410*360*520
G.W.(kg)	10

Digital Viscometer

VSC-E2-1

Options (Need to be ordered together with the host)

- Extreme low viscometer adapter (with one spindle L0)
- Small sample adapter (with spindle 21, 27, 28 and 29 each)
- Temperature-controlled heater (with spindle 21, 27, 28 and 29 each)
- Spindle L5
- Special software that can complete the function in collecting the data automatically
- DV program control download software
- Specially used printer



Apparatus to be equipped

Digital viscosity meter	1 pce	ascending and falling rack	1 set
Standard spindle	1 set	power adapter	1 pce
Protective frame of spindle	1 pce	spanner	1 pce
Seat and leveling feet	1 set	RS232 standard output interface	1 pce
RTD temperature probe	1 pce	-	-

Specifications

Model	VSC-E2-1
Measuring Range (mPa·s)	6~6,000,000
Rotating Speed (RPM)	0.1~200 (Stepless Gear)
Number of Spindles	Spindles (Code L1, L2, L3, L4) are equipped with the product
Accuracy	±1% full scale range in use
Repeatability	±0.5% full scale range in use
Readability	1. when viscosity is lower than 10.0 cp: 0.01 2. when viscosity is lower than 10000 cp: 0.1 3. when viscosity is equal or higher than 10000 cp: 1
Power	Power adapter (input: 100-240V, 50/60Hz)
LCD screen display	The LCD screen can display the viscosity, speed, torque spindle, temperature, shear rate, shear force and the maximum viscosity can be measured in the current spindle speed value.

Digital Viscometer

VSC-E2-2

Options (Need to be ordered together with the host)

- Extreme low viscometer adapter (with one spindle L0)
- Small sample adapter (with spindle 21, 27, 28 and 29 each)
- Temperature-controlled heater (with spindle 21, 27, 28 and 29 each)
- Spindle R1
- Special software that can complete the function in collecting the data automatically
- DV program control download software
- Specially used printer



Apparatus to be equipped

Digital viscosity meter	1 pce	ascending and falling rack	1 set
Standard spindle	1 set	power adapter	1 pce
Protective frame of spindle	1 pce	spanner	1 pce
Seat and leveling feet	1 set	RS232 standard output interface	1 pce
RTD temperature probe	1 pce	-	-

Specifications

Model	VSC-E2-2
Measuring Range (mPa·s)	40~40,000,000
Rotating Speed (RPM)	0.1~200 (Stepless Gear)
Number of Spindles	Spindles (Code R2, R3, R4, R5, R6, R7) are equipped with the product
Accuracy	±1% full scale range in use
Repeatability	±0.5% full scale range in use
Readability	1. when viscosity is lower than 10.0 cp: 0.01 2. when viscosity is lower than 10000 cp: 0.1 3. when viscosity is equal or higher than 10000 cp: 1
Power	Power adapter (input: 100-240V, 50/60Hz)
LCD screen display	The LCD screen can display the viscosity, speed, torque spindle, temperature, shear rate, shear force and the maximum viscosity can be measured in the current spindle speed value.

Digital Viscometer

VSC-E2-3

Options (Need to be ordered together with the host)

- Extreme low viscometer adapter (with one spindle L0)
- Small sample adapter (with spindle 21, 27, 28 and 29 each)
- Temperature-controlled heater (with spindle 21, 27, 28 and 29 each)
- Spindle R1
- Special software that can complete the function in collecting the data automatically
- DV program control download software
- Specially used printer



Apparatus to be equipped

Digital viscosity meter	1 pce	ascending and falling rack	1 set
Standard spindle	1 set	power adapter	1 pce
Protective frame of spindle	1 pce	spanner	1 pce
Seat and leveling feet	1 set	RS232 standard output interface	1 pce
RTD temperature probe	1 pce	-	-

Specifications

Model	VSC-E2-3
Measuring Range (mPa·s)	320~320,000,000
Rotating Speed (RPM)	0.1~200 (Stepless Gear)
Number of Spindles	Spindles (Code R2, R3, R4, R5, R6, R7) are equipped with the product
Accuracy	±1% full scale range in use
Repeatability	±0.5% full scale range in use
Readability	1. when viscosity is lower than 10.0 cp: 0.01 2. when viscosity is lower than 10000 cp: 0.1 3. when viscosity is equal or higher than 10000 cp: 1
Power	Power adapter (input: 100-240V, 50/60Hz)
LCD screen display	The LCD screen can display the viscosity, speed, torque spindle, temperature, shear rate, shear force and the maximum viscosity can be measured in the current spindle speed value.

Digital Viscometer

VSC-KU

Description

- VSC-KU stormal viscometer is a test instrument dedicated to measuring fluid viscosity with the unit of Krebs (KU value), such as the paint, coating etc. Through the function key, circulating in the blue backlight LCD screen display Krebs unit (KU), gram unit (gm) and the CPS (cP) as the unit of viscosity.
- The instrument adopts core control circuit with 16 bit microprocessor, the spindle speed is 200RPM, The measured resistance moment in fluid has been converted to KU value and directly displayed on the screen, We can convert KU, gm, and cP according to the ASTM D562 industrial standard.

Apparatus to be equipped

digital viscosity meter	1 pce
ascending and falling rack	1 set
power adapter	1 pce
spanner	1 pce
seat and leveling feet	1 set
special spindle	1 pce
viscometer operation manual	1 set



Options (Need to be ordered together with the host)

- Specially used printer
- RTD temperature probe (Temp range: 0℃~100℃, ±0.1℃)

Specifications

Model	VSC-KU
Measuring Range	40~141 KU 32~1,099 gm 27~5,274 cP *
Number of Spindles	Special spindle
Accuracy	±1% full scale range in use
Repeatability	±0.5% full scale range in use
Rotating Speed	200 RPM
Power	Power adapter (input: 100-240V, 50/60Hz)

* cP value is for reference only, not for checking.

Digital Viscometer

VSC-H



Description

The main measurement is solid at room temperature and liquid after high temperature heating, such as asphalt, hot melt adhesive, polyethylene wax and so on.

Features



The measured data can be displayed directly on the LCD screen without secondary calculation. <VSoft Viscometer Data Collection, Analysis and Graphing Software> can also be selected to realize data acquisition and analysis and to compile the viscosity-temperature curve.

LCD liquid crystal with blue backlight function can directly display the viscosity, speed, percentile torque, spindle number and the maximum viscosity and temperature of the selected spindle at the current speed. Viscosity value shows continuous change, beyond the measurement range there is an alarm sound prompt.



High subdivision stepper motor, accurate and stable speed.



The measuring performance of the instrument has reached the level of the same type of products abroad through computer correction accuracy.



High-temperature furnace uses embedded integral heating, uniform heating and small thermal inertia.

Apparatus to be equipped

Digital viscosity meter	1 pce	Ascending and falling	1 set
Frame and pipe	1 set	Power adapter	1 pce
Standard spindle	1 set	Spanner	1 pce
Seat and leveling feet	1 set	RTD temperature probe	1 pce
Temperature controller	1 pce	Heating furnace	1 pce
Insulation cover	1 pce	Special tweezers	1 pce
Position bracket	1 pce	Connect cable	1 pce
Power cord	1 pce	Connection hook	2 set

Specifications

Model	VSC-H
Measuring Range (mPa·s)	50~200,000
Rotating Speed (RPM)	5, 10, 20, 50, 100
Number of Spindles	Spindles (Code21, 27, 28, 29) are equipped with the product
Accuracy	±1% full scale range in use
Repeatability	±0.5% full scale range in use
Sample capacity(m L)	10~20
Temperature control range(C)	10 C above ambient~300 C
Power	Power adapter (input: 220V 50Hz)
LCD screen display	Viscometer: The LCD screen can display the viscosity, speed, torque spindle, temperature and the maximum viscosity can be measured in the current spindle speed value. The temperature controller: Display setting temperature and actual measuring temperature.

Digital Viscometer

VSC-HA



Description

The main measurement is solid at room temperature and liquid after high temperature heating, such as asphalt, hot melt adhesive, polyethylene wax and so on.

Features



The measured data can be displayed directly on the LCD screen without secondary calculation. <VSoft Viscometer Data Collection, Analysis and Graphing Software> can also be selected to realize data acquisition and analysis and to compile the viscosity-temperature curve.

LCD liquid crystal with blue backlight function can directly display the viscosity, speed, percentile torque, spindle number and the maximum viscosity and temperature of the selected spindle at the current speed. Viscosity value shows continuous change, beyond the measurement range there is an alarm sound prompt.



High subdivision stepper motor, accurate and stable speed.



The measuring performance of the instrument has reached the level of the same type of products abroad through computer correction accuracy.



High-temperature furnace uses embedded integral heating, uniform heating and small thermal inertia.

Apparatus to be equipped

Digital viscosity meter	1 pce	Ascending and falling	1 set
Frame and pipe	1 set	Power adapter	1 pce
Standard spindle	1 set	Spanner	1 pce
Seat and leveling feet	1 set	RTD temperature probe	1 pce
Temperature controller	1 pce	Heating furnace	1 pce
Insulation cover	1 pce	Special tweezers	1 pce
Position bracket	1 pce	Connect cable	1 pce
Power cord	1 pce	Connection hook	2 set

Specifications

Model	VSC-HA
Measuring Range (mPa·s)	50~10,000,000
Rotating Speed (RPM)	0.1~200 (Stepless Gear)
Number of Spindles	Spindles (Code21, 27, 28, 29) are equipped with the product
Method	Manual and Automatic
Accuracy	±1% full scale range in use
Repeatability	±0.5% full scale range in use
Sample capacity(m L)	10~20
Temperature control range(°C)	10°C above ambient~300°C
Power	Power adapter (input: 220V 50Hz)
LCD screen display	Viscometer: The LCD screen can display the viscosity, speed, torque spindle, temperature and the maximum viscosity can be measured in the current spindle speed value. The temperature controller: Display setting temperature and actual measuring temperature.

Digital Viscometer

VSC-H1-1



Description

The main measurement is solid at room temperature and liquid after high temperature heating, such as asphalt, hot melt adhesive, polyethylene wax and so on.

Features



The measured data can be displayed directly on the LCD screen without secondary calculation. <VSoft Viscometer Data Collection, Analysis and Graphing Software> can also be selected to realize data acquisition and analysis and to compile the viscosity-temperature curve.

LCD liquid crystal with blue backlight function can directly display the viscosity, speed, percentile torque, spindle number and the maximum viscosity and temperature of the selected spindle at the current speed. Viscosity value shows continuous change, beyond the measurement range there is an alarm sound prompt.



High subdivision stepper motor, accurate and stable speed.



The measuring performance of the instrument has reached the level of the same type of products abroad through computer correction accuracy.



High-temperature furnace uses embedded integral heating, uniform heating and small thermal inertia.

Apparatus to be equipped

Digital viscosity meter	1 pce	Ascending and falling	1 set
Frame and pipe	1 set	Power adapter	1 pce
Standard spindle	1 set	Spanner	1 pce
Seat and leveling feet	1 set	RTD temperature probe	1 pce
Temperature controller	1 pce	Heating furnace	1 pce
Insulation cover	1 pce	Special tweezers	1 pce
Position bracket	1 pce	Connect cable	1 pce
Power cord	1 pce	Connection hook	2 set

Specifications

Model	VSC-H1-1
Measuring Range (mPa·s)	10~1,000,000
Rotating Speed (RPM)	0.1~99.9 (Stepless Gear)
Number of Spindles	Spindles (Code21, 27, 28, 29) are equipped with the product
Method	±1% full scale range in use
Repeatability	±0.5% full scale range in use
Sample capacity(m L)	10~20
Temperature control range(℃)	10℃ above ambient~300℃
Power	Power adapter (input: 220V 50Hz)
LCD screen display	Viscometer: The LCD screen can display the viscosity, speed, torque spindle, temperature and the maximum viscosity can be measured in the current spindle speed value. The temperature controller: Display setting temperature and actual measuring temperature

Digital Viscometer

VSC-H1-2



Description

The main measurement is solid at room temperature and liquid after high temperature heating, such as asphalt, hot melt adhesive, polyethylene wax and so on.

Features



The measured data can be displayed directly on the LCD screen without secondary calculation. <VSoft Viscometer Data Collection, Analysis and Graphing Software> can also be selected to realize data acquisition and analysis and to compile the viscosity-temperature curve.

LCD liquid crystal with blue backlight function can directly display the viscosity, speed, percentile torque, spindle number and the maximum viscosity and temperature of the selected spindle at the current speed. Viscosity value shows continuous change, beyond the measurement range there is an alarm sound prompt.



High subdivision stepper motor, accurate and stable speed.



The measuring performance of the instrument has reached the level of the same type of products abroad through computer correction accuracy.



High-temperature furnace uses embedded integral heating, uniform heating and small thermal inertia.

Apparatus to be equipped

Digital viscosity meter	1 pce	Ascending and falling	1 set
Frame and pipe	1 set	Power adapter	1 pce
Standard spindle	1 set	Spanner	1 pce
Seat and leveling feet	1 set	RTD temperature probe	1 pce
Temperature controller	1 pce	Heating furnace	1 pce
Insulation cover	1 pce	Special tweezers	1 pce
Position bracket	1 pce	Connect cable	1 pce
Power cord	1 pce	Connection hook	2 set

Specifications

Model	VSC-H1-2
Measuring Range (mPa·s)	100~10,000,000
Rotating Speed (RPM)	0.1~99.9 (Stepless Gear)
Number of Spindles	Spindles (Code21, 27, 28, 29) are equipped with the product
Accuracy	±1% full scale range in use
Repeatability	±0.5% full scale range in use
Sample capacity(m L)	10~20
Temperature control range(℃)	10℃ above ambient~300℃
Power	Power adapter (input:220V 50Hz)
LCD screen display	Viscometer: The LCD screen can display the viscosity, speed, torque spindle, temperature and the maximum viscosity can be measured in the current spindle speed value. The temperature controller: Display setting temperature and actual measuring temperature.

Digital Viscometer

VSC-H1-3



Description

The main measurement is solid at room temperature and liquid after high temperature heating, such as asphalt, hot melt adhesive, polyethylene wax and so on.

Features



The measured data can be displayed directly on the LCD screen without secondary calculation. <VSoft Viscometer Data Collection, Analysis and Graphing Software> can also be selected to realize data acquisition and analysis and to compile the viscosity-temperature curve.

LCD liquid crystal with blue backlight function can directly display the viscosity, speed, percentile torque, spindle number and the maximum viscosity and temperature of the selected spindle at the current speed. Viscosity value shows continuous change, beyond the measurement range there is an alarm sound prompt.



High subdivision stepper motor, accurate and stable speed.



The measuring performance of the instrument has reached the level of the same type of products abroad through computer correction accuracy.



High-temperature furnace uses embedded integral heating, uniform heating and small thermal inertia.

Apparatus to be equipped

Digital viscosity meter	1 pce	Ascending and falling	1 set
Frame and pipe	1 set	Power adapter	1 pce
Standard spindle	1 set	Spanner	1 pce
Seat and leveling feet	1 set	RTD temperature probe	1 pce
Temperature controller	1 pce	Heating furnace	1 pce
Insulation cover	1 pce	Special tweezers	1 pce
Position bracket	1 pce	Connect cable	1 pce
Power cord	1 pce		

Specifications

Model	VSC-H1-3
Measuring Range (mPa·s)	800~80,000,000
Rotating Speed (RPM)	0.1~99.9 (Stepless Gear)
Number of Spindles	Spindles (Code21, 27, 28, 29) are equipped with the product
Accuracy	±1% full scale range in use
Repeatability	±0.5% full scale range in use
Sample capacity(m L)	10~20
Temperature control range(℃)	10℃ above ambient~300℃
Power	Power adapter (input:220V 50Hz)
LCD screen display	Viscometer: The LCD screen can display the viscosity, speed, torque spindle, temperature and the maximum viscosity can be measured in the current spindle speed value. The temperature controller: Display setting temperature and actual measuring temperature.

Digital Viscometer

VSC-H2-1



Description

The main measurement is solid at room temperature and liquid after high temperature heating, such as asphalt, hot melt adhesive, polyethylene wax and so on.

Features



The measured data can be displayed directly on the LCD screen without secondary calculation. <VSoft Viscometer Data Collection, Analysis and Graphing Software> can also be selected to realize data acquisition and analysis and to compile the viscosity-temperature curve.

LCD liquid crystal with blue backlight function can directly display the viscosity, speed, percentile torque, spindle number and the maximum viscosity and temperature of the selected spindle at the current speed. VSC-H2 series can also show shear rate and shear stress. Viscosity value shows continuous change, beyond the measurement range there is an alarm sound prompt.



High subdivision stepper motor, accurate and stable speed.



The measuring performance of the instrument has reached the level of the same type of products abroad through computer correction accuracy.



High-temperature furnace uses embedded integral heating, uniform heating and small thermal inertia.

Apparatus to be equipped

Digital viscosity meter	1 pce	Ascending and falling	1 set
Frame and pipe	1 set	Power adapter	1 pce
Standard spindle	1 set	Spanner	1 pce
Seat and leveling feet	1 set	RTD temperature probe	1 pce
Temperature controller	1 pce	Heating furnace	1 pce
Insulation cover	1 pce	Special tweezers	1 pce
Position bracket	1 pce	Connect cable	1 pce
Power cord	1 pce	Connection hook	2 set

Specifications

Model	VSC-H2-1
Measuring Range (mPa·s)	5~1,000,000
Rotating Speed (RPM)	0.1~200 (Stepless Gear)
Number of Spindles	Spindles (Code21, 27, 28, 29) are equipped with the product
Accuracy	±1% full scale range in use
Repeatability	±0.5% full scale range in use
Sample capacity(m L)	10~20
Temperature control range(℃)	10℃ above ambient~300℃
Power	Power adapter (input:220V 50Hz)
LCD screen display	Viscometer: The LCD screen can display the viscosity, speed, torque spindle, temperature, shear rate, shear force and the maximum viscosity can be measured in the current spindle speed value. The temperature controller: Display setting temperature and actual measuring temperature.

Digital Viscometer

VSC-H2-2



Description

The main measurement is solid at room temperature and liquid after high temperature heating, such as asphalt, hot melt adhesive, polyethylene wax and so on.

Features



The measured data can be displayed directly on the LCD screen without secondary calculation. <VSoft Viscometer Data Collection, Analysis and Graphing Software> can also be selected to realize data acquisition and analysis and to compile the viscosity-temperature curve.

LCD liquid crystal with blue backlight function can directly display the viscosity, speed, percentile torque, spindle number and the maximum viscosity and temperature of the selected spindle at the current speed. VSC-H2 series can also show shear rate and shear stress. Viscosity value shows continuous change, beyond the measurement range there is an alarm sound prompt.



High subdivision stepper motor, accurate and stable speed.



The measuring performance of the instrument has reached the level of the same type of products abroad through computer correction accuracy.



High-temperature furnace uses embedded integral heating, uniform heating and small thermal inertia.

Apparatus to be equipped

Digital viscosity meter	1 pce	Ascending and falling	1 set
Frame and pipe	1 set	Power adapter	1 pce
Standard spindle	1 set	Spanner	1 pce
Seat and leveling feet	1 set	RTD temperature probe	1 pce
Temperature controller	1 pce	Heating furnace	1 pce
Insulation cover	1 pce	Special tweezers	1 pce
Position bracket	1 pce	Connect cable	1 pce
Power cord	1 pce	Connection hook	2 set

Specifications

Model	VSC-H2-2
Measuring Range (mPa·s)	50~10,000,000
Rotating Speed (RPM)	0.1~200 (Stepless Gear)
Number of Spindles	Spindles (Code21, 27, 28, 29) are equipped with the product
Accuracy	±1% full scale range in use
Repeatability	±0.5% full scale range in use
Sample capacity(m L)	10~20
Temperature control range(°C)	10°C above ambient~300°C
Power	Power adapter (input:220V 50Hz)
LCD screen display	Viscometer: The LCD screen can display the viscosity, speed, torque spindle, temperature, shear rate, shear force and the maximum viscosity can be measured in the current spindle speed value. The temperature controller: Display setting temperature and actual measuring temperature.

Digital Viscometer

VSC-H2-3

Description

The main measurement is solid at room temperature and liquid after high temperature heating, such as asphalt, hot melt adhesive, polyethylene wax and so on.



Features



The measured data can be displayed directly on the LCD screen without secondary calculation. <VSoft Viscometer Data Collection, Analysis and Graphing Software> can also be selected to realize data acquisition and analysis and to compile the viscosity-temperature curve.

LCD liquid crystal with blue backlight function can directly display the viscosity, speed, percentile torque, spindle number and the maximum viscosity and temperature of the selected spindle at the current speed. VSC-H2 series can also show shear rate and shear stress. Viscosity value shows continuous change, beyond the measurement range there is an alarm sound prompt.



High subdivision stepper motor, accurate and stable speed.



The measuring performance of the instrument has reached the level of the same type of products abroad through computer correction accuracy.



High-temperature furnace uses embedded integral heating, uniform heating and small thermal inertia.

Apparatus to be equipped

Digital viscosity meter	1 pce	Ascending and falling	1 set
Frame and pipe	1 set	Power adapter	1 pce
Standard spindle	1 set	Spanner	1 pce
Seat and leveling feet	1 set	RTD temperature probe	1 pce
Temperature controller	1 pce	Heating furnace	1 pce
Insulation cover	1 pce	Special tweezers	1 pce
Position bracket	1 pce	Connect cable	1 pce
Power cord	1 pce		

Specifications

Model	VSC-H2-3
Measuring Range (mPa·s)	400~80,000,000
Rotating Speed (RPM)	0.1~200 (Stepless Gear)
Number of Spindles	Spindles (Code21, 27, 28, 29) are equipped with the product
Accuracy	±1% full scale range in use
Repeatability	±0.5% full scale range in use
Sample capacity(m L)	10~20
Temperature control range(℃)	10℃ above ambient~300℃
Power	Power adapter (input: 220V 50Hz)
LCD screen display	Viscometer: The LCD screen can display the viscosity, speed, torque spindle, temperature, shear rate, shear force and the maximum viscosity can be measured in the current spindle speed value. The temperature controller: Display setting temperature and actual measuring temperature.

Viscometer

VSC-P80



Description

Viscometer is an instrument for rapidly testing the stirring characteristics and gelatinization characteristics of starch. It is suitable for the determination of starch quality in wheat, corn, rice, sorghum, potato, lotus root and other grains and crops. It is a rotational viscometer with programmable temperature and variable shear.

Features

Precisely controllable heating and cooling rates

Adopts an efficient heating and cooling system and a temperature sensor for direct temperature measurement in the sample bowl to ensure the repeatability and accuracy of the test.

Mix well and evenly

The special geometry of the paddle ensures that the sample is thoroughly mixed evenly without any starch granules settling.

Easy and convenient operation

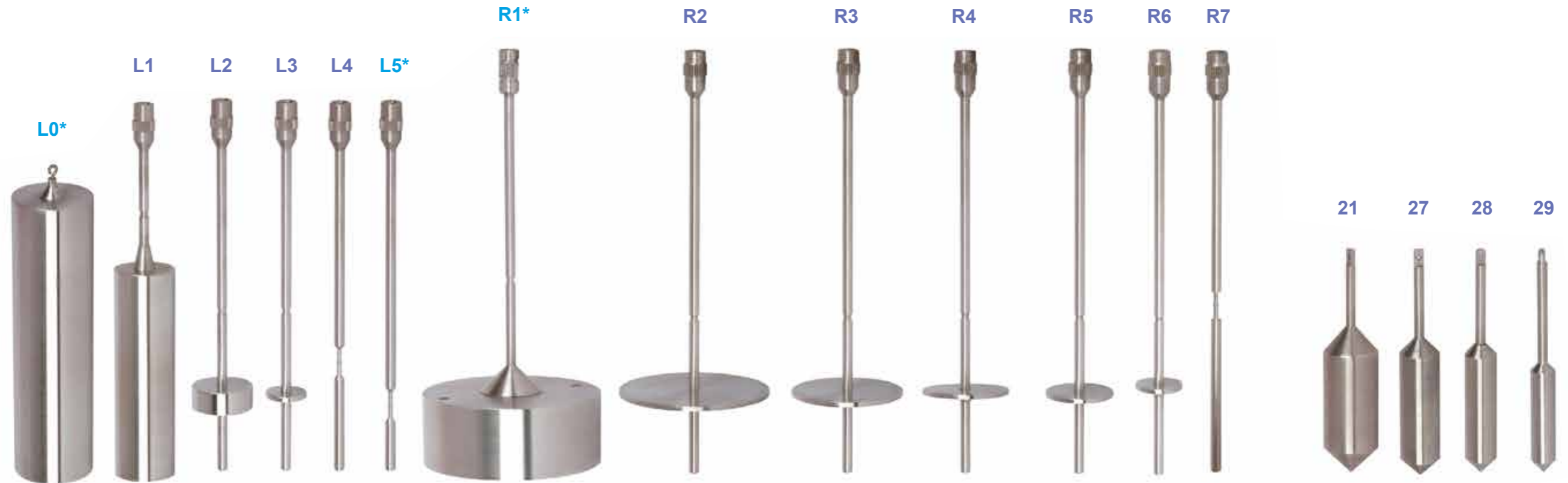
Short measurement time makes the product very convenient to use.

Features

- 20 groups of extended analysis results can be set, such as viscosity at target speed, speed at target temperature, temperature at target time, time to target viscosity, etc.
- The instrument software can provide four language interfaces: Chinese, English, Spanish and French. (Please note when placing an order). The experimental result data and curve graphs can be generated into EXCEL documents and PDF files.
- The instrument software comes with knowledge bases on physical properties, rheology, thermodynamics and electricity, with no less than 100 sets of terminology analysis. Physical property related knowledge analysis can be retrieved at any time in the software; it has national standard algorithms and the software can be directly called.
- The instrument software can set up super administrators, non-editable reports, and experimental traceability functions; it has a one-click export function for experimental reports containing experimental information, experimental parameters, experimental graphs, and experimental results.

Specifications

Model	VSC-P80
Operation Environment	Temperature:10℃-45℃ ; Relative Humidity: 10-90%
Heating Mode	Uses copper metal block heating method and has overheat protection function.
Automatic Analysis	Max. viscosity, attenuation, retention strength, recovery value, final viscosity, stirring value, gelatinization temperature
Test Program Steps	Up to 128 can be designed
Sample Dosage	2~3g
Heating	Program-controlled heating, the speed can reach up to 15℃/min
Cooling	Program-controlled cooling, the speed can reach up to 15℃/min
Temp. Accuracy	No more than ±0.3℃ (under 25℃)
Temp. Control Range	0~100℃
Speed Range	Computer controlled, adjustable within the range of 20~5000rpm
Speed Accuracy	±1% (160rpm)
Unit of Use	cP and RVU
Viscosity Range	20~50,000cP (80rpm);10~25,000cP (160rpm)
Viscosity Accuracy	Less than or equal to ±3% (S2000 oil, 5000cP)
Display	4 rows*20 bits
Electricity	220~30V, 50Hz
Tower Cap Lifting Control System	Stepper motor controls lifting and lowering, lifting speed: 0-10mm/s
Blade Rotation Control System	Brushless motor control



Specification

Measuring range mPa·s \ Rotor No.	L0*	L1	L2	L3	L4	L5*	R1*	R2	R3	R4	R5	R6	R7	21	27	28	29
VSC-N5	1~100	20~1K	100~5K	400~20K	2K~100K	4K~200K	-	-	-	-	-	-	-	17~833	83~4.2K	167~8.3K	333~16.7K
VSC-N8	1~2K	20~2K	100~100K	400~400K	2K~2M	4K~4M	-	-	-	-	-	-	-	17~16.7K	83~83.3K	167~166.7K	333~333.3K
VSC-S1	1~600	20~6K	100~30K	400~120K	2K~600K	4K~1.2M	-	-	-	-	-	-	-	17~5K	83~25K	167~50K	333~100K
VSC-S2	0.6~6K	12~60K	60~300K	240~1.2M	1.2K~6M	2.4K~12M	-	-	-	-	-	-	-	10~50K	50~250K	100~500K	200~1M
VSC-S3	6~60K	160~800K	800~4M	3.2K~16M	16K~80M	32K~160M	-	-	-	-	-	-	-	100~500K	500~2.5M	1K~5M	2K~10M
VSC-SA	3~60K	-	-	-	-	-	-	-	-	-	-	-	-	50~500K	250~2.5M	500~5M	1000~10M
VSC-E1-1	0.6~6K	12~60K	60~300K	240~1.2M	1.2K~6M	2.4K~12M	-	-	-	-	-	-	-	10~50K	50~250K	100~500K	200~1M
VSC-E1-2	6~60K	-	-	-	-	-	20~100K	80~400K	200~1M	400~2M	800~4M	2K~10M	8K~40M	100~500K	500~2.5M	1K~5M	2K~10M
VSC-E1-3	50~500K	-	-	-	-	-	160~800K	640~3.2M	1.6K~8M	3.2K~16M	6.4K~32M	16K~80M	64K~320M	800~4M	4K~20M	8K~40M	16K~80M
VSC-E2-1	0.3~6K	6~60K	30~300K	120~1.2M	600~6M	1.2K~12M	-	-	-	-	-	-	-	5~50K	25~250K	50~500K	100~1M
VSC-E2-2	3~60K	-	-	-	-	-	10~100K	40~400K	100~1M	200~2M	400~4M	1K~10M	4K~40M	50~500K	250~2.5M	500~5M	1K~10M
VSC-E2-3	25~500K	-	-	-	-	-	80~800K	320~3.2M	800~8M	1.6K~16M	3.2K~32M	8K~80M	32K~320M	400~4M	2K~20M	4K~40M	8K~80M

1. Spindles with mark * are optional

2. The No.21,27.28 and 29 spindles are equipped with small sample adapter which is optional; temperature-controlled heaters are standard.

3. K=1000 M=1000000